







Star Valley Ranch Area Trail Map

-  Vista—Prater Trail 1.2 miles
-  Valley View Trail 0.9 mile
-  Maple Trail 0.6 mile
-  Forest Service Boundary
-  Trailhead
-  Viewpoint

These trails were made possible by a grant from the Wyoming State Parks, Historic Sites and Trails.



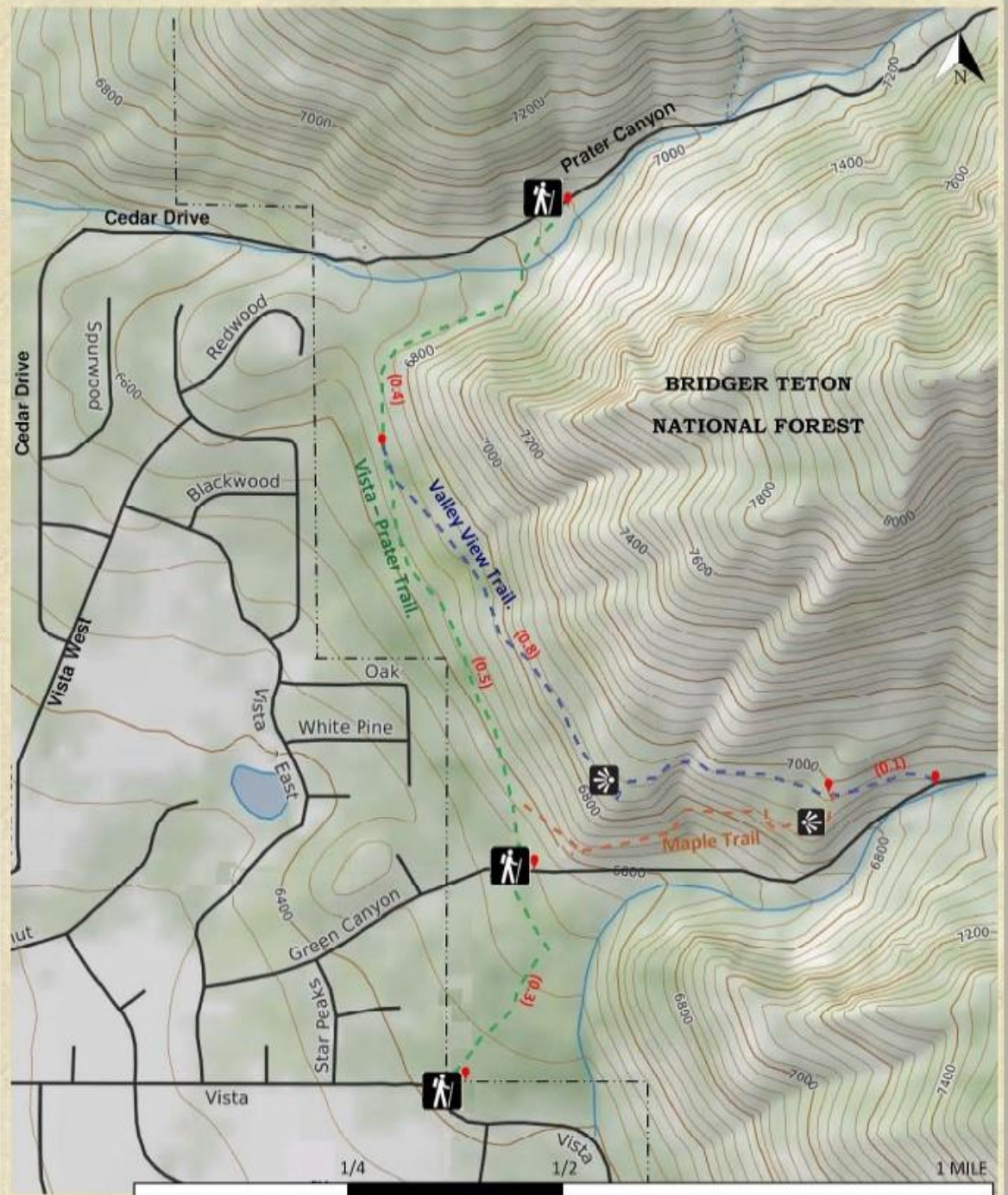
Trails constructed and maintained by the Town of Star Valley Ranch Volunteer Trail Crew in cooperation with the USDA Forest Service.



Get involved with constructing and maintaining our trails by volunteering with our Star Valley Ranch Trail Crew. For more information call 307-883-8696.

www.facebook.com/SVRtrailcrew/

Email: svrtrails@gmail.com

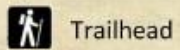


Prater Canyon Trail to Prater Mountain (Trail 3077)

Trailhead to Saddle
Distance—1.8 miles
2,085' elevation gain

Trailhead to Prater Mountain
Distance—2.2 miles
2735' elevation gain

Trailhead to Murphy Creek Rd.
Distance—3.8 miles



Trailhead



Viewpoint



----- Forest Service Boundary

Cedar Creek Trail

Trailhead to spruce grove
Distance—0.9 miles

Trailhead to basin
Distance—3.5 miles
Basin elevation 7500'

Trailhead to lake
Distance—4.5 miles
Lake elevation 8800'

